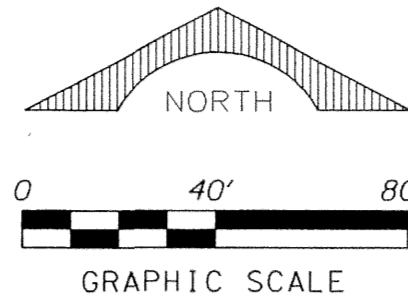


PERIMETER

SURVEYING & MAPPING
 Certificate of Authorization No. LB7264
 Prepared by: Jeff S. Hodapp, P.S.M.
 951 Broken Sound Parkway, Suite 108
 Boca Raton, Florida 33487
 Tel: (561) 241-9988
 Fax: (561) 241-5182



THOUSAND OAKS

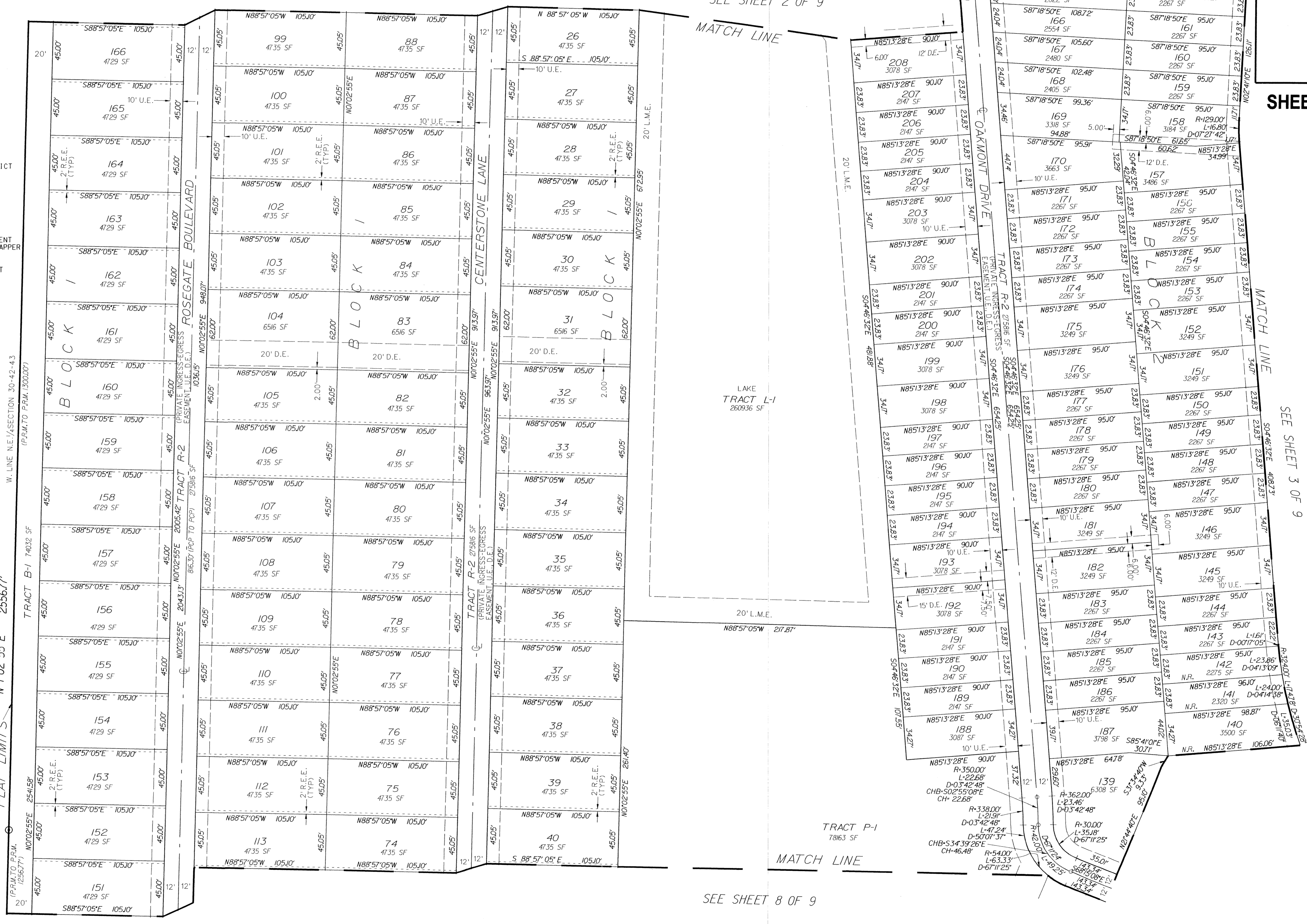
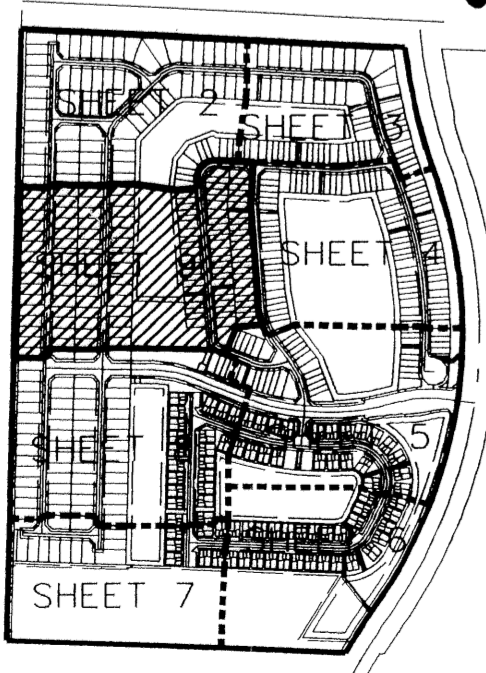
A PORTION OF THE NORTHEAST ONE-QUARTER OF SECTION 30, TOWNSHIP 42 SOUTH, RANGE 43, EAST, CITY OF RIVIERA BEACH, PALM BEACH COUNTY, FLORIDA.

143

- LEGEND:
- ⊙ SET P.R.M. (UNLESS OTHERWISE NOTED) - 4" DIAMETER BRASS DISK IN CONC. MON. STAMPED - LB7264 P.C.P.
 - ABBREVIATIONS:
 - CHB CHORD BEARING
 - CONC. CONCRETE
 - COR. CORNER
 - D DELTA (CENTRAL ANGLE)
 - D.E. DRAINAGE EASEMENT
 - I.R. IRON ROD
 - I.R.C. IRON ROD AND CAP
 - L.B. LICENSED BUSINESS
 - L.S. LICENSED SURVEYOR
 - L.M.E. LAKE MAINTENANCE EASEMENT
 - L.M.A.E. LAKE MAINTENANCE ACCESS EASEMENT
 - L.W.D.D. LAKE WORTH DRAINAGE DISTRICT MONUMENT
 - O.R.B. OFFICIAL RECORDS BOOK
 - N.R. NON-RADIAL
 - P.B. PLAT BOOK
 - P.B.C.R. PALM BEACH COUNTY RECORDS PAGE
 - P.C.P. PERMANENT CONTROL POINT
 - P.O.B. POINT OF BEGINNING
 - P.O.C. POINT OF COMMENCEMENT
 - P.R.M. PERMANENT REFERENCE MONUMENT
 - P.S.M. PROFESSIONAL SURVEYOR & MAPPER
 - P.U.D. PLANNED UNIT DEVELOPMENT
 - R RADIUS
 - R.E.E. ROOF ENCROACHMENT EASEMENT
 - R.W. RIGHT-OF-WAY SECTION
 - SEC. SECTION
 - S.F. SQUARE FEET
 - S.F.W.M.D. SOUTH FLORIDA WATER MANAGEMENT DISTRICT UTILITY EASEMENT
 - U.E. UTILITY EASEMENT

SOUTH FLORIDA WATER MANAGEMENT DISTRICT C-17 CANAL
 (320' R/W, PER R/W MAP C-17-13, 9/11/79)

PLAT LIMITS N 1°02'55"E 2556.77'



SEE SHEET 2 OF 9

MATCH LINE

LAKE TRACT L-1 260936 SF

TRACT P-1 7863 SF

SEE SHEET 8 OF 9

SHEET 9 OF 9

SEE SHEET 3 OF 9